

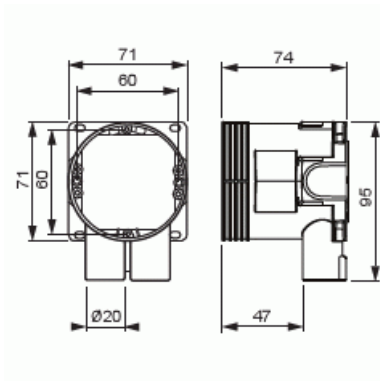
High mounting box

High mounting box, 73 mm

Type: AU5.32
GTIN: 6418677335068



The AU5.32 mounting box is 73 mm high. The box has 2 branch inlets for Ø 20 conduit. There are also 3 knock-out inlets altogether at the side, and 2 at the bottom. Made of halogen free material (IEC/61249-2-21) and fulfills the requirements of the glow wire test according to the standard IEC/EN60670: 2005 (850 °C).



Technical specification

General Information

Product ID:	2TKA001740G1
-------------	--------------

Dimensions

For plastic pipe:	Ø20mm
-------------------	-------

Packing

Package:	50
Unit:	PCS

ETIM Data

Mounting method:	Flush mounted (plaster)
------------------	-------------------------



Shape:	Round
Construction type:	Device connection box (round/square)
Model:	Single
Provided with revolving ring:	No
Connectable:	Yes
Equipped with:	None
Diameter:	71 mm
Length:	71 mm
Width:	71 mm
Depth:	71 mm
Inner depth:	72 mm
For number of electric fittings:	1
Mounting switching equipment:	Screwing
With screws:	Yes
Housing feed-through by break-out opening:	Yes
Housing feed-through by seal membrane:	No
Housing feed-through by nozzle:	Yes
Housing feed-through by step membrane:	No
For tube diameter:	20/25 mm
Pipe locking:	Yes
Pipe locking optional:	No
Inlet from the rear:	Yes
Number of inlets:	2
Number of included spouts:	2
Material:	Plastic
Halogen free:	Yes
Surface protection:	Untreated
Colour:	White
Transparent cover:	No
Cover attachment:	Snapped on
Sealable:	No
With screening:	No
Air tight:	No
Clamp position fixed:	No



Luminaire hook mounting:	No
Special application:	None