

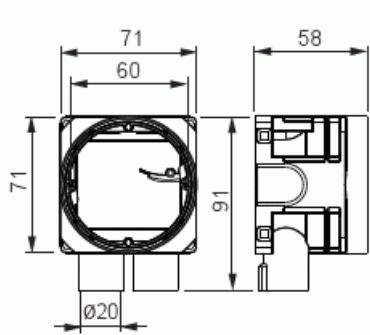
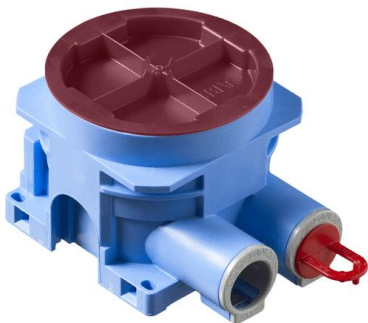
**Mounting box**

Mounting box, board thickness 13-27 mm

**Type:** AU5.6  
**GTIN:** 6438199005027



The mounting box includes a rotating, steplessly adjustable extension ring enabling installation on boards with a thickness of 13-27 mm. Installation depth is 55 mm and overall height 58-72 mm. The extension ring can be tilted 0-4° and the box has 2 opened branch inlets for 16/20 mm conduits. In addition, there are four knock-out inlets on the side, two 16 mm and one 20 mm inlet in the bottom. Made of halogen free material (IEC/61249-2-21) and fulfills the requirements of the glow wire test according to the standard IEC/EN60670: 2005 (850 °C).



**Technical specification**

**General Information**

Product ID:	2TKA00003511
-------------	--------------

**Thermal conditions**

Operating temperature:	-20 ... 60 °C
------------------------	---------------

**Dimensions**

For plastic pipe:	Ø16/20mm
-------------------	----------

**Electrical quantities**

Operating voltage:	400 V
--------------------	-------

Packing

Package:	50
Unit:	PCS

ETIM Data

Mounting method:	Flush mounted (plaster)
Shape:	Round
Construction type:	Device connection box (round/square)
Model:	Single
Provided with revolving ring:	No
Connectable:	Yes
Equipped with:	None
Diameter:	71 mm
Length:	71 mm
Width:	71 mm
Depth:	71 mm
Inner depth:	55 mm
For number of electric fittings:	1
Mounting switching equipment:	Screwing
With screws:	Yes
Housing feed-through by break-out opening:	Yes
Housing feed-through by seal membrane:	No
Housing feed-through by nozzle:	Yes
Housing feed-through by step membrane:	No
For tube diameter:	16/20 mm
Pipe locking:	Yes
Pipe locking optional:	No
Inlet from the rear:	Yes
Number of inlets:	2
Material:	Plastic
Halogen free:	Yes
Surface protection:	Untreated
Colour:	Blue

Product Card

Mounting box, board thickness 13-27 mm



Degree of protection (IP):	IP3X
Cover model:	Construction protective cover
Transparent cover:	No
Cover attachment:	Snapped on
Sealable:	No
With screening:	No
Air tight:	No
Clamp position fixed:	No
Luminaire hook mounting:	No
Special application:	None