

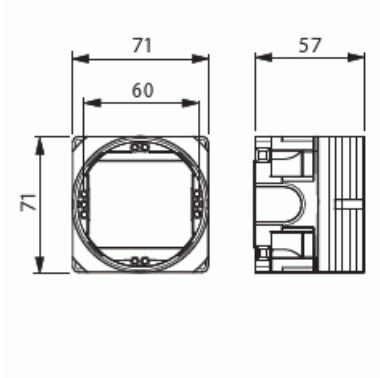
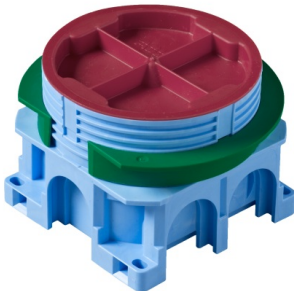
Mounting box

for 12-13/24-26 mm board

Type: AU60.5
GTIN: 6438199003405



The mounting box has a total of six knock-out inlets, two of which are on the same side. The bottom of the box provides access for two rear inlets. The green adapter ring, delivered with the box, is used in single-board walls (12-13 mm). The ring is removed when the wall thickness is two boards (24-26 mm). The boxes can be connected to each other with the PMR474 interconnector. Made of halogen free material (IEC/61249-2-21) and fulfills the requirements of the glow wire test according to the standard IEC/EN60670: 2005 (850 °C).



Technical specification

General Information

Product ID:	2TKA00001481
-------------	--------------

Thermal conditions

Operating temperature:	-25 ... 60 °C
------------------------	---------------

Packing

Package:	80
Unit:	PCS

ETIM Data

Mounting method:	Flush mounted (plaster)
------------------	-------------------------

Product Card
for 12-13/24-26 mm board



Shape:	Round
Construction type:	Device connection box (round/square)
Model:	Single
Provided with revolving ring:	No
Connectable:	Yes
Equipped with:	None
Diameter:	71 mm
Length:	71 mm
Width:	71 mm
Depth:	71 mm
Inner depth:	54 mm
For number of electric fittings:	1
Mounting switching equipment:	Screwing
With screws:	Yes
Housing feed-through by break-out opening:	Yes
Housing feed-through by seal membrane:	No
Housing feed-through by nozzle:	No
Housing feed-through by step membrane:	No
Pipe locking:	No
Pipe locking optional:	Yes
Inlet from the rear:	Yes
Material:	Plastic
Halogen free:	Yes
Surface protection:	Untreated
Colour:	Blue
Degree of protection (IP):	IP3X
Cover model:	Construction protective cover
Transparent cover:	No
Cover attachment:	Snapped on
Sealable:	No
With screening:	No
Air tight:	No
Clamp position fixed:	No
Luminaire hook mounting:	No



Special application:	None
----------------------	------